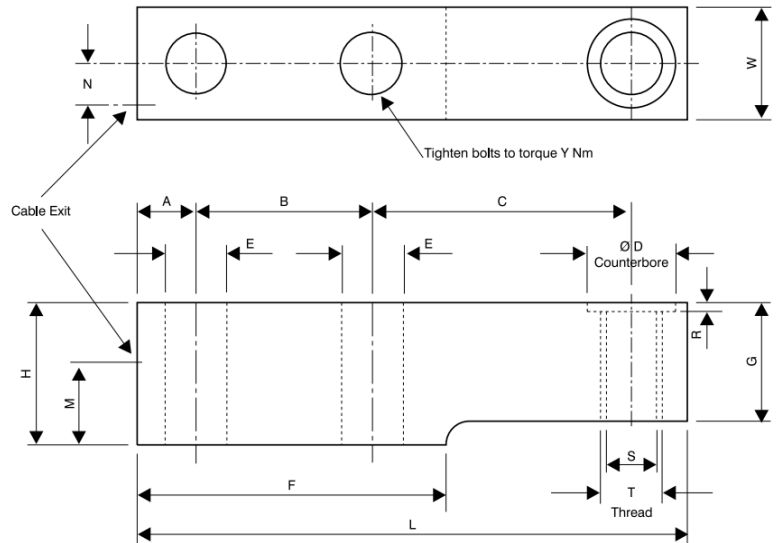
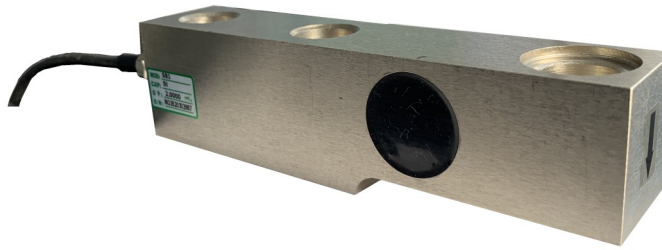


# ASB1 Shear beam Load cell



## Features

- ◆ Capacities : 250kg to 10t
- ◆ Tool Steel plated, IP67 sealing
- ◆ Hopper, Bin and Silo weighing
- ◆ Floor scales

## Dimensions

	A	B	C	D	E	F	G	H	L	M	N	R	S	T	W	Y
0.25t	15	38	61.5	12	10.2	65	20	28.5	125	17	7.6	2	10.2	M12x1.75	26.5	45
0.5t, 1t	15	38	61.5	12	10.2	65	26	28.5	125	14.25	7.6	2	10.2	M12x1.75	26.5	45
2.5t, 5t	20	60	88	30	20.2	105	40	48	187	28	14	3	21	None	40	360
10t	24	60	117	40	26	120	58	68	225	39	17	5	26	None	48	810

## Specifications

Capacity (t)	0.25, 0.5, 1, 2.5, 5 and 10t	Insulation Resistance (MΩ)	> 5000
Rated Output/RO (mV/V)	2 ± 0.01	Recommended Excitation (V)	5-15
Zero Balance (mV/V)	±1%	Maximum Excitation (V)	18
Non-Linearity (%RO)	0.023	Compensated Temp Range (°C)	-10~+50
Hysteresis (%RO)	< 0.010%	Operating Temp Range (°C)	-20~+60
Repeatability (%RO)	< 0.015%	Safe Overload (%RO)	150
Creep (%RO/30min)	< 0.023%	Ultimate Overload (%RO)	300
Temp effect on output (%RO/10°C)	< 0.015	Cable Size (mm)	∅5mm
Temp effect on zero (%RO/10°C)	< 0.020%	Cable Length (m)	3
Input Impedance (Ω)	410+/-50 Ω	Material	Tool Steel
Output Impedance (Ω)	350+/- 5 Ω	Protection Class	IP67
Excitation +ve	Red	Signal +ve	Green
Excitation -ve	Black	Signal -ve	White