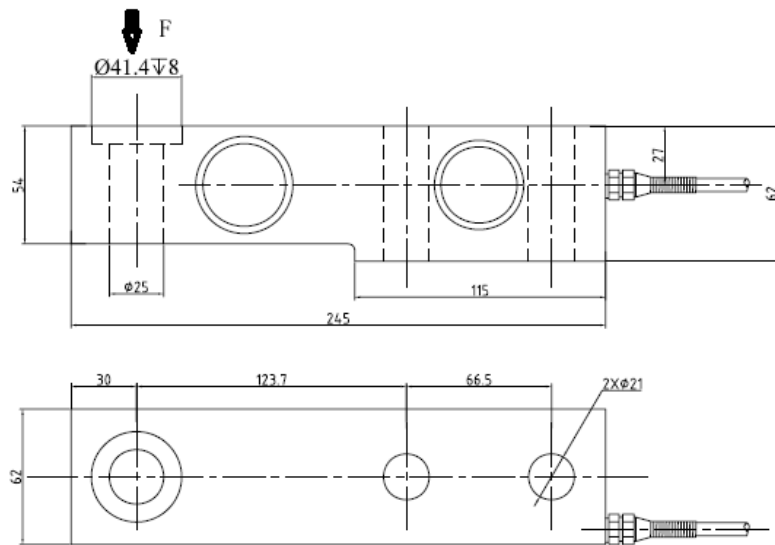


# AW8708 - Shear Beam Load Cell



## Specifications

Capacity (t)	7	Insulation (MΩ)	> 5000
Rated Output/RO (mV/V)	1.75 ± 0.01	Recommended Excitation (V)	5-15
Zero Balance (mV/V)	±1%	Maximum Excitation (V)	18
Non-Linearity (%RO)	0.025	Compensated Temp Range (°C)	-10~+50
Hysteresis (%RO)	< 0.010%	Operating Temp Range (°C)	-20~+60
Repeatability (%RO)	< 0.015%	Safe Overload (%RO)	150
Creep (%RO/30min)	< 0.023%	Ultimate Overload (%RO)	300
Temp effect on output (%RO/10° < 0.015		Cable Size (mm)	Ø5.5x4000
Temp effect on zero (%RO/10°C) < 0.020%		Cable Length (m)	4
Input Impedance (Ω)	405 +/-30 Ω	Material	Alloy Steel
Output Impedance (Ω)	350 +/- 5 Ω	Protection Class	IP67
Excitation +ve	Green	Signal +ve	White
Sense +	Yellow	Signal -ve	Red
Excitation -ve	Black	Sense -	Blue