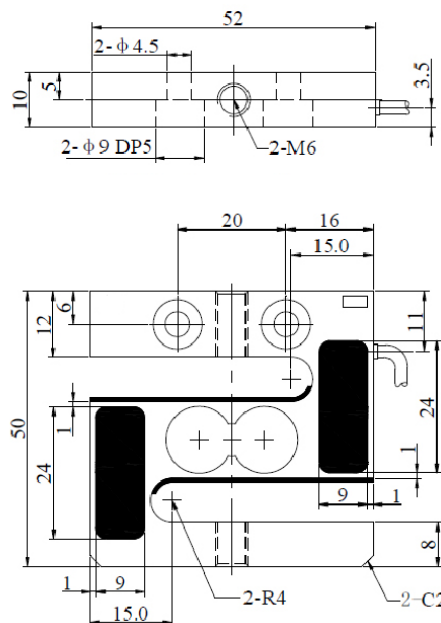
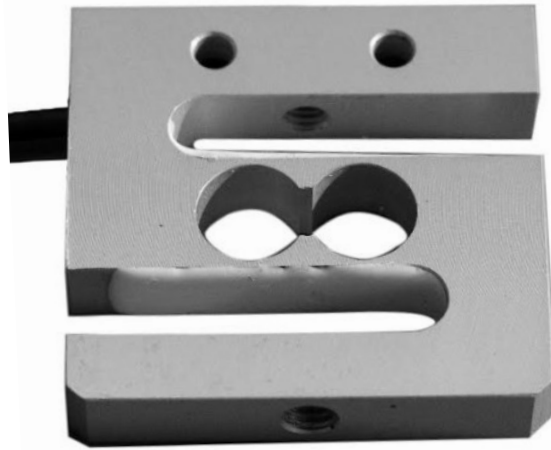


# AWSL S-Type Load Cell



## Specifications

Capacity (t)	2, 5	Cable Length (m)	2
Rated Output/RO (mV/V)	1 ± 0.1 (2kg), 2 ± 0.2 (5kg)	Insulation (MΩ)	> 5000
Zero Balance (mv/V)	±2%	Recommended Excitation (VDC)	5-12
Non-Linearity (%RO)	0.030	Maximum Excitation (V DC)	18
Hysteresis (%RO)	< 0.020%	Compensated Temp Range (°C)	-10~+50
Repeatability (%RO)	< 0.020%	Operating Temp Range (°C)	-20~+60
Creep (%RO/30min)	< 0.035%	Safe Overload (%RO)	150
Temp effect on output (%RO/10°C)	< 0.015%	Ultimate Overload (%RO)	200
Temp effect on zero (%RO/10°C)	< 0.020%	Cable Size (mm)	∅4 x 5000 (2m)
Input Impedance (Ω)	390+/-30 Ω	Material	Aluminium Alloy
Output Impedance (Ω)	350 +/- 5 Ω	Protection Class	IP66
Excitation +ve	Red	Signal +ve	Green
Excitation -ve	Black	Signal -ve	White