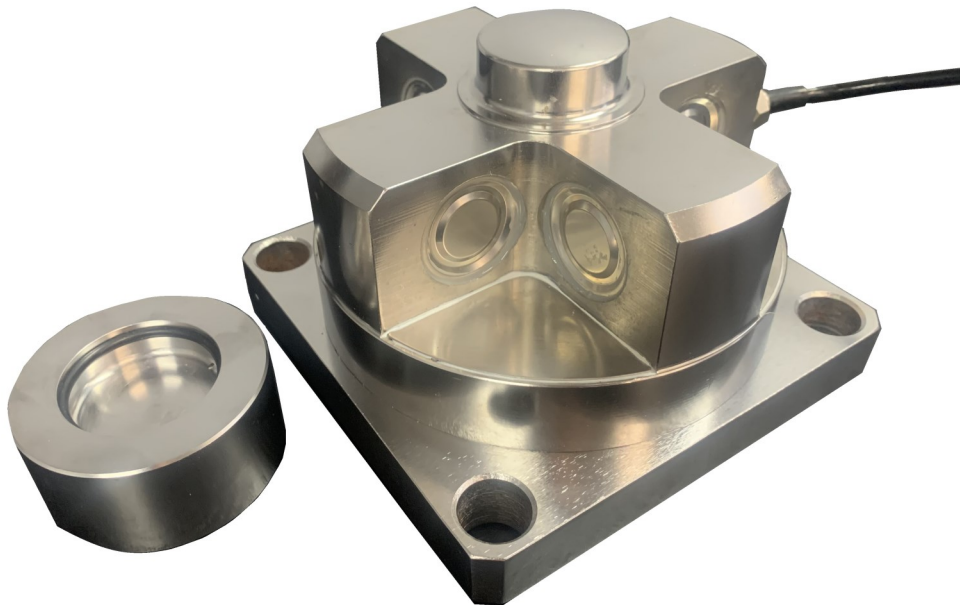


# AF11 - Cross Beam Load Cell



## Features

- Cross Beam design
- IP67 sealing
- Stainless steel construction
- Optional Silo / Tank Mounts

## Applications

- Road weighbridges
- Silo, Tanks & Hoppers
- Force measurement

## Specifications

Capacity (t)	10, 20, 30 , 40
Rated Output/RO (mV/V)	2 ± 0.01
Zero Balance (mV/V)	±1%
Non-Linearity (%RO)	0.023
Hysteresis (%RO)	< 0.010%
Repeatability (%RO)	< 0.015%
Creep (%RO/30min)	< 0.023%
Temp effect on output (%RO/10°C)	< 0.015
Temp effect on zero (%RO/10°C)	< 0.020%
Input Impedance (Ω)	770 +/-50 Ω
Output Impedance (Ω)	700+/- 5 Ω
Excitation +ve	Red
Excitation -ve	Black

Insulation (MΩ)	> 5000
Recommended Excitation (V)	5-15
Maximum Excitation (V)	18
Compensated Temp Range (°C)	-10~+50
Operating Temp Range (°C)	-20~+60
Safe Overload (%RO)	150
Ultimate Overload (%RO)	300
Cable Size (mm)	∅5.5mm
Cable Length (m)	10
Material	Stainless Steel
Protection Class	IP67
Signal +ve	Green
Signal -ve	White

## Dimensions (mm)

