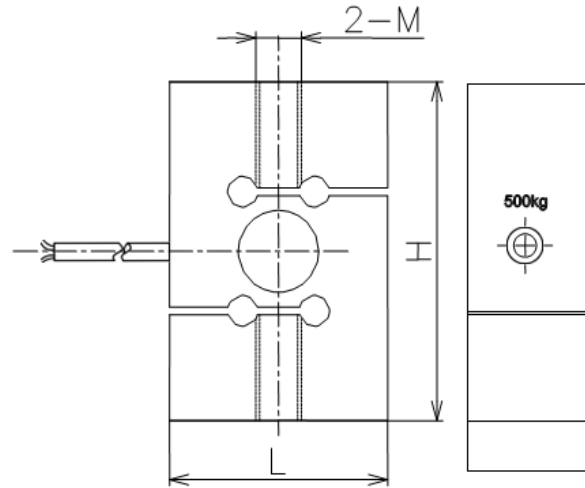
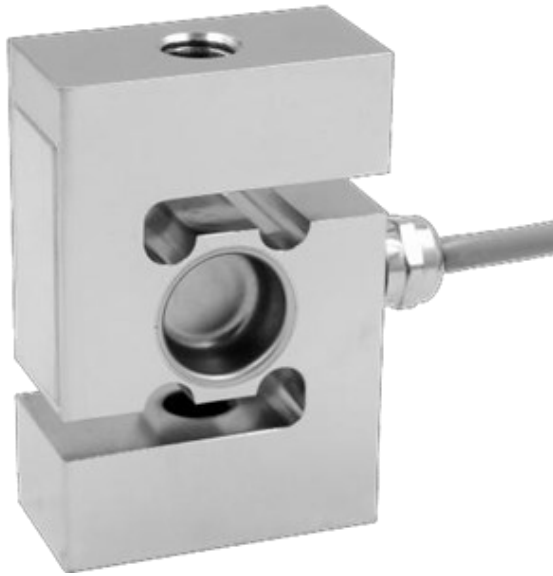


AWS40 Load cell



www.loadsensors.com.au

Specifications	Unit	Value
Capacity	kg	50, 100, 200, 500, 1000, 2000, 3000, 5000
Rated Output (RO)	mV/V	2 ± 0.25%
Zero Balance	mV/V	0.01
Non-Linearity	(%RO)	0.018
Hysteresis	(%RO)	± 0.018
Repeatability	(%RO)	< 0.018
Creep	(%RO/30min)	< 0.024
Temp effect on output	%RO/10°C	< 0.014
Temp effect on zero	%RO/10°C	< 0.017
Input Impedance	(Ω)	350 ± 30 Ω
Output Impedance	(Ω)	350 ± 5 Ω
Insulation	(MΩ)	≥ 5000MΩ/100VDC
Recommended Excitation	(V DC)	5-15
Maximum Excitation	(V DC)	20
Compensated Temp Range	(°C)	-10~+40
Operating Temp Range	(°C)	-30~+70
Safe Overload	(%RO)	150
Ultimate Overload	(%RO)	300
Cable Size	mm	∅5.4 x 3000 (3m)
Material		Stainless Steel
Protection Class		IP68

Capacity (kg)	L	H	W	M
50	50.8	63.5	25.4	M8
100, 200	50.8	76.2	25.4	M12
500	57.2	87.3	31	M12
1000	57.2	87.3	31	M12
2000	69.8	100	36.5	M24×2
3000	69.8	100	36.5	M24×2
5000	76.2	114.3	36.5	M24×2

Features

- ◆ Low profile, small deflection
- ◆ Made of stainless steel
- ◆ Tension and compression application
- ◆ Used for dynamometers, hopper scale and industrial measuring system.

Wiring Code

Excitation +ve Red
 Excitation -ve Black
 Signal +ve Green
 Signal -ve White